

## Dinkytown Recommendations

---

### **Al's Breakfast**

413 14<sup>th</sup> Ave SE  
612-331-9991  
-Breakfast Only  
-14 person capacity

### **Big Ten Bar & Grill**

606 Washington Ave SE  
612-378-0467  
-Sports Bar  
-Great Sandwiches

### **Annie's Parlor**

313 14<sup>th</sup> Ave SE  
612-379-0744  
-Burger & Malt Shop  
-Outdoor Seating  
-Family Friendly

### **Caspian Bistro**

2418 University Ave SE  
612-623-1113  
-Mediterranean  
-Closed Monday  
-No sales of alcohol

### **Burrito Loco**

418 13<sup>th</sup> Ave SE  
612-746-5626  
-Bar  
-Late Night

### **Campus Pizza**

825 Washington Ave SE  
612-378-2417  
-Bottled Beer

### **Kafe 421**

421 14<sup>th</sup> Ave SE  
612-623-4900  
-Small Wine Bar  
-Euro/Middle Eastern

### **Sally's Saloon**

712 Washington Ave SE  
612-331-3122  
-Large Sports Bar  
-Outdoor Seating

### **Loring Pasta Bar**

327 14<sup>th</sup> Ave Se  
612-378-4849  
-Upscale Italian  
-Live Music  
-Outdoor Seating

## Stadium Village Recommendations

---

### **Stub & Herbs**

227 Oak Street SE  
612-379-0555  
-Large Beer Selection  
-Outdoor Seating

### **Mesa Pizza**

1323 4th St. SE  
612--436-3001  
-Late Night

### **Bona**

815 Washington Ave SE  
612-331-5011  
-Vietnamese

### **Potbelly's Sandwiches**

326 14<sup>th</sup> Ave SE  
612-331-0191  
-Great Sandwiches

### **Punch Pizza**

802 Washington Ave SE  
612-331-3122  
-Neopolitan-Style Pizza

### **Vescio's**

406 14<sup>th</sup> Ave SE  
612 378-1747  
-Family Style Italian  
-Closed Monday's

### **Villiage Wok**

610 Washington Ave SE  
612-331-9041  
-Chinese Cuisine  
-Open until 3:00 AM

### **Chipotle**

800 Washington Ave Se  
612-378-7078  
-Mexican

### **Noodles & Company**

820 Washington Ave Se  
612-331-4865  
-American/Pasta

### **Jimmy John's**

219 Oak Street SE  
612-331-7827  
-Sub Sandwiches

# Coffman Union – Dining

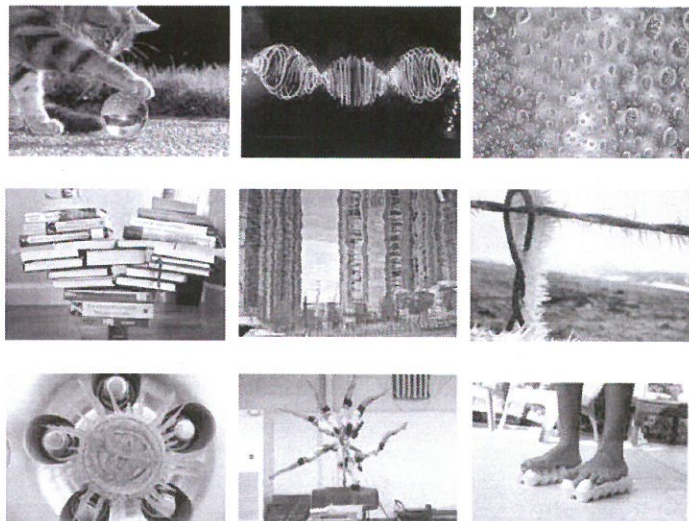
- ChickFilA:** 11 a.m. to 2:30 p.m. (M-F)
- Einstein’s Bagel:** 7:30 a.m. to 2:30 p.m. (M-F)
- Goldy’s Game Room:** (bowling alley with food options)  
10 a.m. to 10 p.m. (M-F), 5 p.m. to 10:30 p.m. (Sat)
- Gopher Express:** (small convenience store): 7:30 a.m. to 5 p.m. (M-F)
- Greens to Go (salads):** 11 a.m. to 2:30 p.m. (M-F)
- Panda Express:** 11 a.m. to 2:30 p.m. (M-F)
- Starbucks:** 7:30 a.m. to 4 p.m. (M-F)
- Topios (pizza, calzone, etc.):** 11 a.m. to 2:30 p.m. (M-F)

## View Photos & Cast Votes

### AAPT’s 2014 High School Physics Photo Contest

The top 100 photos submitted in the AAPT’s High School Physics Photo Contest will be displayed in the **Coffman Union** near the Registration area. Voting is open from Sunday night til Tuesday.

high school physics  
**photo contest**



[www.aapt.org/Programs/contests/photocontest.cfm](http://www.aapt.org/Programs/contests/photocontest.cfm)